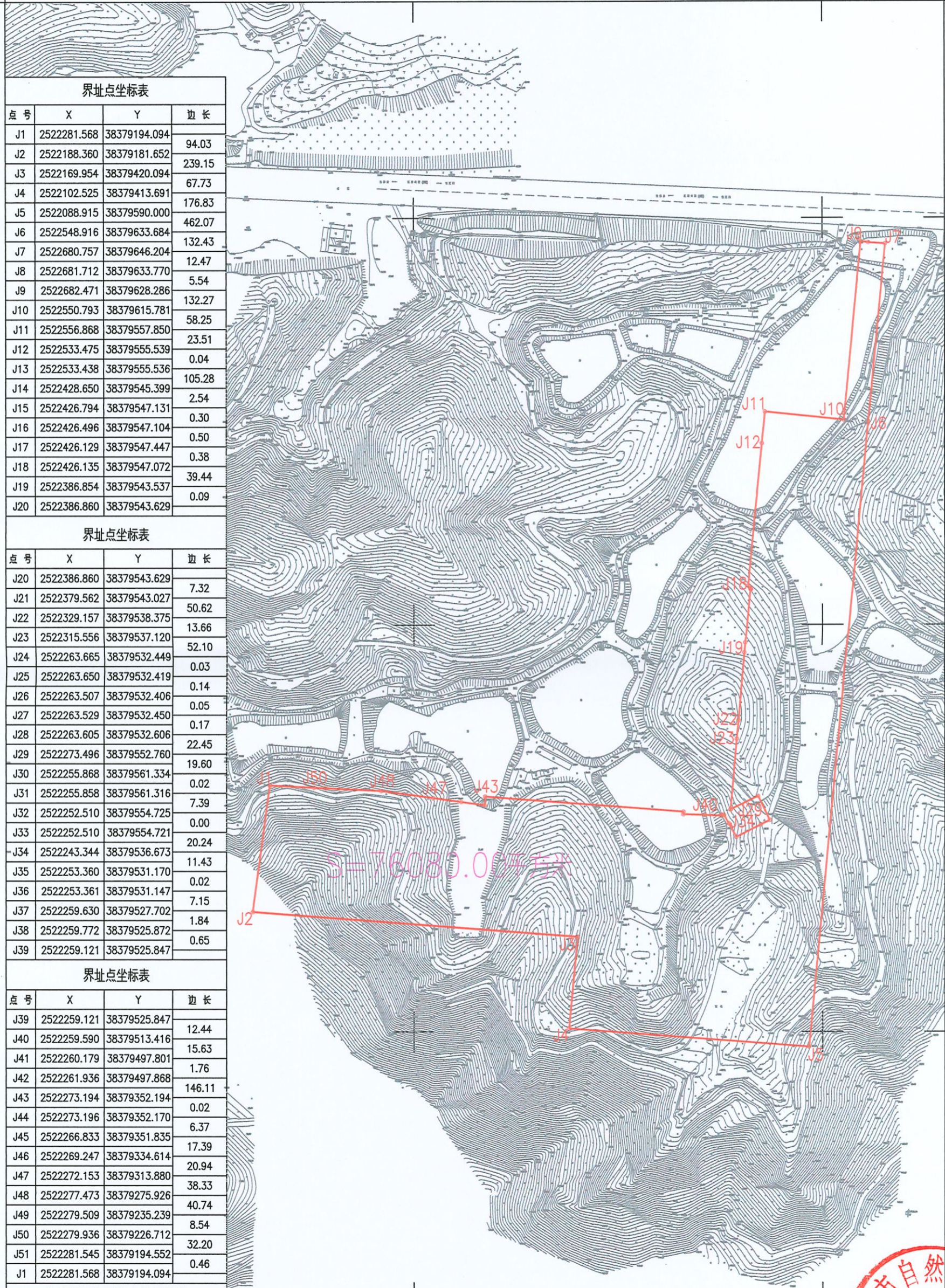


鹤山市2022年度第三批城镇建设用地图(LK324)

鹤山市龙口镇福远股份经济合作联社

单位: m.m²

38379.00 2522.86 38379.69 2522.86



点号	X	Y	边长
J1	2522281.568	38379194.094	94.03
J2	2522188.360	38379181.652	239.15
J3	2522169.954	38379420.094	67.73
J4	2522102.525	38379413.691	176.83
J5	2522088.915	38379590.000	462.07
J6	2522548.916	38379633.684	132.43
J7	2522680.757	38379646.204	12.47
J8	2522681.712	38379633.770	5.54
J9	2522682.471	38379628.286	132.27
J10	2522550.793	38379615.781	58.25
J11	2522556.868	38379557.850	23.51
J12	2522533.475	38379555.539	0.04
J13	2522533.438	38379555.536	105.28
J14	2522428.650	38379545.399	2.54
J15	2522426.794	38379547.131	0.30
J16	2522426.496	38379547.104	0.50
J17	2522426.129	38379547.447	0.38
J18	2522426.135	38379547.072	39.44
J19	2522386.854	38379543.537	0.09
J20	2522386.860	38379543.629	

点号	X	Y	边长
J20	2522386.860	38379543.629	7.32
J21	2522379.562	38379543.027	50.62
J22	2522329.157	38379538.375	13.66
J23	2522315.556	38379537.120	52.10
J24	2522263.665	38379532.449	0.03
J25	2522263.650	38379532.419	0.14
J26	2522263.507	38379532.406	0.05
J27	2522263.529	38379532.450	0.17
J28	2522263.605	38379532.606	22.45
J29	2522273.496	38379552.760	19.60
J30	2522255.868	38379561.334	0.02
J31	2522255.858	38379561.316	7.39
J32	2522252.510	38379554.725	0.00
J33	2522252.510	38379554.721	20.24
J34	2522243.344	38379536.673	11.43
J35	2522253.360	38379531.170	0.02
J36	2522253.361	38379531.147	7.15
J37	2522259.630	38379527.702	1.84
J38	2522259.772	38379525.872	0.65
J39	2522259.121	38379525.847	

点号	X	Y	边长
J39	2522259.121	38379525.847	12.44
J40	2522259.590	38379513.416	15.63
J41	2522260.179	38379497.801	1.76
J42	2522261.936	38379497.868	146.11
J43	2522273.194	38379352.194	0.02
J44	2522273.196	38379352.170	6.37
J45	2522266.833	38379351.835	17.39
J46	2522269.247	38379334.614	20.94
J47	2522272.153	38379313.880	38.33
J48	2522277.473	38379275.926	40.74
J49	2522279.509	38379235.239	8.54
J50	2522279.936	38379226.712	32.20
J51	2522281.545	38379194.552	0.46
J1	2522281.568	38379194.094	

S=76080.00 平方米 合114.1200亩

2521.90 38379.00 2521.90 38379.69

鹤山市山水测绘有限公司

鹤山市山水测绘有限公司
2022年11月数字制图
2000国家大地坐标系:中央经线114度
1985国家高程基准:等高距为1米
2007年版本
证书编号:乙测资字44500859

1:3000

